

Insulation



# AIR-CELL<sup>®</sup> Insulshed<sup>®</sup> 50

Fibre-free Comfort in your Shed



- 2-in-1 Insulation and vapour barrier
- Fibre-free, nonallergenic, non-irritant
- Quick and easy to install
- Strong, tough, durable
- Water-resistant and unaffected by moisture
- Anti-bacterial and anti-fungal
- Rodent and insect resistant
- Fire retardant
- Made in Australia

Fibre-free  
Core



  
Kingspan<sup>®</sup>

# Product Details

## Typical Design Details

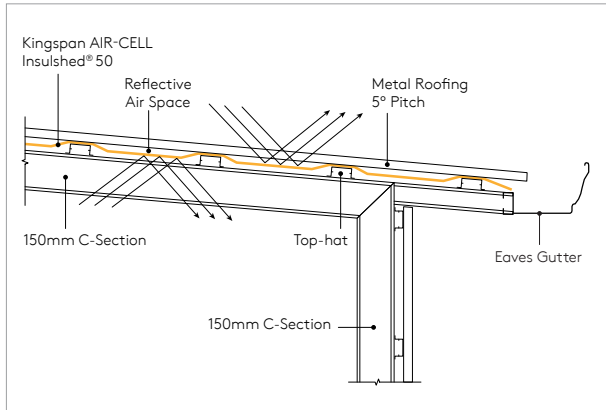


Figure 1. Side elevation of Kingspan AIR-CELL Insulshed® 50 in a metal roof shed.

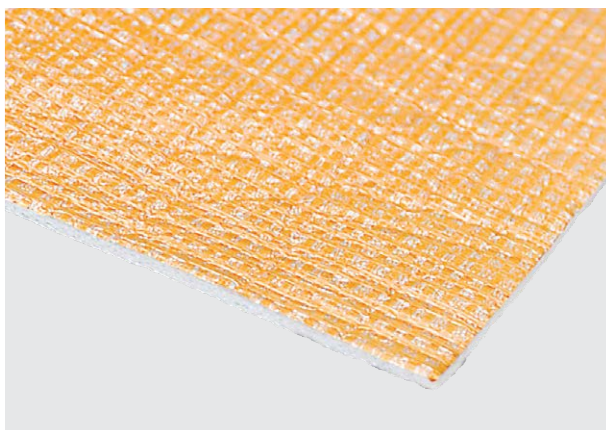


Figure 2. Physically cross-linked Kingspan AIR-CELL Insulshed® 50.

## Product Description



Figure 3. Kingspan AIR-CELL Insulshed® 50.

Australian-made Kingspan AIR-CELL Insulshed® 50 is your solution for comfort in your shed, achieving indoor temperatures that are significantly cooler in summer and warmer in winter.

Kingspan AIR-CELL Insulshed® is manufactured with a patented closed-cell foam structure sandwiched by reflective foil surfaces, and is the fibre-free, non-allergenic alternative to conventional bulk insulation.

Kingspan AIR-CELL Insulshed® 50 has been designed specifically for shed applications only. Kingspan AIR-CELL Insulshed® 50 is not suitable for use in residential or commercial buildings.

## Product Data

AIR-CELL Insulshed® 50	30m <sup>2</sup>	45m <sup>2</sup>
Product Thickness (nom.)	5 mm	5 mm
Roll Diameter (nom.)	390 mm	470 mm
Roll Weight (nom.)	6.9 kg	10.4 kg
Roll Sizes	1350 mm x 22.25 m	1350 mm x 33.33 m
Reflectance		
Anti-Glare Face	95%	95%
Reflective Face	97%	97%
Emittance		
Anti-Glare Face	E0.05	E0.05
Reflective Face	E0.03	E0.03

# Other Information

## Product Specifications

Property	Test Method / Standard	Specification	Classification
Flammability Index	AS 1530.2:1993	≤5	Low
Burst Strength	AS 3706.4:2012 (CBR)	1.0 kN	-
IR Emittance	AS/NZS 4201.5:1994	Reflective Face: E0.03 Anti-Glare Face: E0.05	IR Reflective IR Reflective
IR Emittance	-	-	Category RR

## Management Standards

Standard	Management System
ISO 9001:2015	Quality Management
ISO 14001:2015	Environmental Management
ISO 45001:2018	Occupational Health & Safety Management
ISO 50001:2018	Energy Management

## Environmental Data

Aspect	Characteristic
Re-usability	Re-usable if removed with care (long term of service expected)
Water Use	No water used in manufacturing process



## General Requirements

1. Fit Kingspan AIR-CELL neatly around doors, windows, and any penetrations, and tape if necessary to prevent air leakage.
2. When taping, a plastic squeegee or blade must be used to apply appropriate pressure to the tape. Surfaces must be dry and free from dust, oil or grease prior to taping (please refer to brochure Kingspan Insulation Tape for further information).
3. Leave minimum 100 mm clearance around heat producing flues or light fittings (refer to light fitting manufacturer).

These instructions are guidelines only and should be interpreted with consideration for the specific building design. The installation of Kingspan AIR-CELL should be in conformance with the applicable clauses from AS 3999:2015 and AS/NZS 4200.2:2017 unless otherwise specified.

Kingspan AIR-CELL can be damaged by intense heat above 105° C and contact with sparks and flame from blow torches, welders, cutting tools, etc. must be avoided.

The installer must make due provision for safety when installing Kingspan AIR-CELL in any application.

## Safety Information

- Non-hazardous/non-toxic.
- No personal protective equipment required.
- UV protective sunglasses and screen should be used when installing in direct sunlight.
- Ensure at least 100 mm clearance from hot flues and light fittings (check for safe distance with lighting supplier).
- Foil facings are conductive to electricity – avoid contact with un-insulated electrical cables and fittings.

## Handling and Storage

Kingspan AIR-CELL insulation products must be transported and stored in its protective packaging and kept clean and dry. Standing rolls on end reduces risk of damage should moisture be present in the packaging. Surfaces must be kept free of contaminants such as dust and grease, and must not be stored with foil surfaces in contact with alkaline materials i.e. wet cement, lime, etc.

---

# Contact Details

---

## Australia

Kingspan Insulation Pty Ltd  
TF: 1300 247 235  
E: [info@kingspaninsulation.com.au](mailto:info@kingspaninsulation.com.au)  
[www.kingspaninsulation.com.au](http://www.kingspaninsulation.com.au)



---

© Kingspan, Kooltherm, Air-Cell, GreenGuard, Thermakraft and the Lion Device are Registered Trademarks of the Kingspan Group plc in Australia and other countries. All rights reserved. © Kingspan Insulation Pty Ltd.

Kingspan Insulation Pty Ltd reserves the right to amend product specifications without prior notice. The information, technical details and fixing instructions etc. included in this literature are given in good faith and apply to uses described. Recommendations for use should be verified as to the suitability and compliance with actual requirements, specifications and any applicable laws and regulations. For other applications or conditions of use, Kingspan Insulation offers a Technical Advisory Service the advice of which should be sought for uses of Kingspan Insulation products that are not specifically described herein. Please check that your copy of the literature is current by contacting us or visiting <https://www.kingspan.com/au/en/products/insulation/roof-insulation/air-cell-insulshed-50/>

